

Phone : +(242) 05 377 95 54
+(242) 05 377 95 64
AFTN : FCCCYNXX
E-mail : bnibrazza@yahoo.fr
aim-fccc@asecna.org
Web : https://aim.asecna.aero



**BUREAU NOTAM INTERNATIONAL
DE L'AFRIQUE CENTRALE**

B.P. 660 BRAZZAVILLE - CONGO

AIRAC AIP SUP

NR 47/B/26FC

11 JUN 2026

CAMEROUN – CENTRAFRIQUE – CONGO – GABON – GUINEE ÉQUATORIALE – SAO TOME – TCHAD

MAKOKOU/ Emmanuel ISSOZE NGONDET FOOK

**MISE A JOUR DES PROCEDURES DE VOL IFR
IFR FLIGHT PROCEDURES UPDATE**

Effective date	09 JUL 2026
Validity	PERM

Ce SUP d'AIP informe les usagers sur la mise à jour des procédures de vol IFR de l'aérodrome de MAKOKOU/ Emmanuel ISSOZE NGONDET

This AIP SUP informs users of the update of IFR flight procedures at MAKOKOU/ Emmanuel ISSOZE NGONDET aerodrome

ASECNA AIP INSERT PAGES

07AD2-FOOK-IAC-RNP 06
07AD2-FOOK-IAC-RNP 06-DATA
07AD2-FOOK-IAC-RNP 24
07AD2-FOOK-IAC-RNP 24-DATA

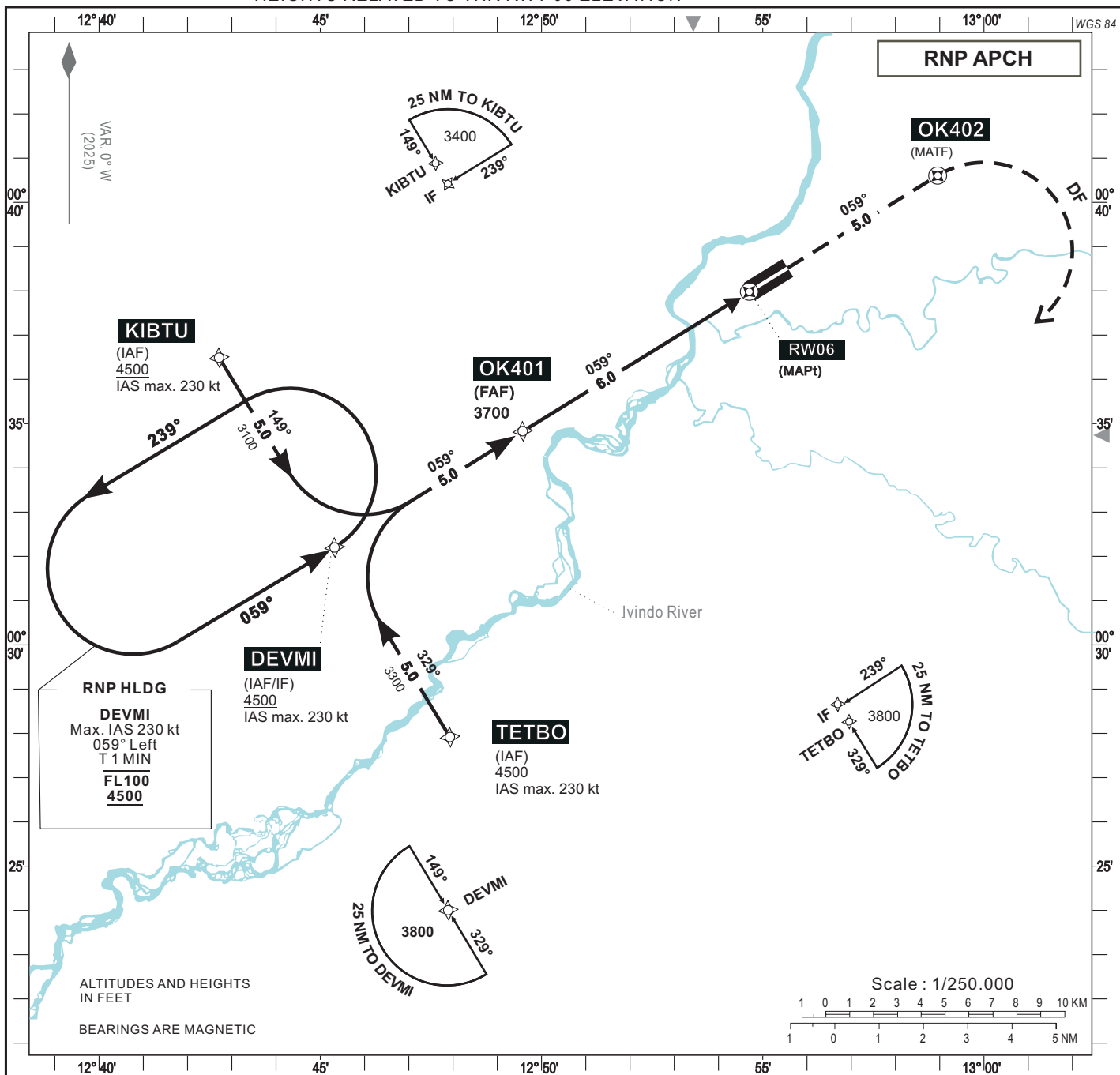
***CE SUP AIP COMPORTE 01 PAGE ET 04 ANNEXES /
THIS AIP SUP HAS 01 PAGE AND 04 ANNEXES***

INSTRUMENT APPROACH CHART
Categories A-B-C-D

AERODROME ELEV : 1736
THR RWY 06 ELEV : 1736
HEIGHTS RELATED TO THR RWY 06 ELEVATION

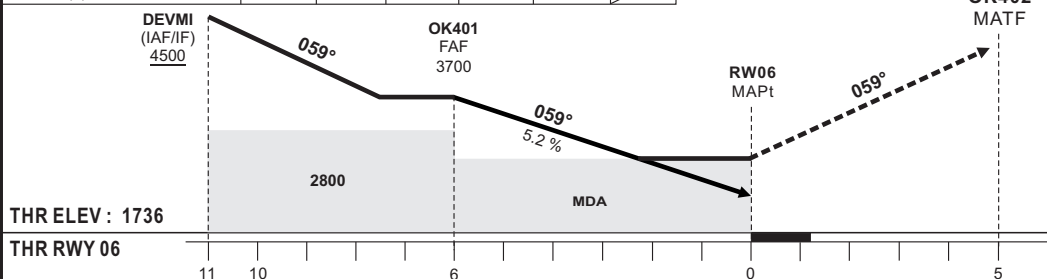
AFIS : MAKOKOU INFORMATION 118.5

MAKOKOU / Emmanuel ISSOZE
NGONDET (FOOK)
RNP RWY 06



Distance to THR 06 (NM)	FAF	5	4	3	2	RW06
Altitude (ft)	3700	3380	3060	2745	2425	

TRANSITION ALTITUDE : 6000



MISSED APPROACH

Climb straight ahead.
At OK402, turn right direct to TETBO at/or above 4500 ft.
IAS max. 230 kt.

Do not turn before MAPt

CAT	LNAV				CIRCLING (1)				VIS
	OCA	OCH	MDA	MDH	OCA	OCH	MDA	MDH	
A					1500	2192 (456)	2200 (470)	1500	
B					1500	2362 (626)	2370 (630)	1600	
C	2192 (456)		2200 (460)		2000	2460 (724)	2460 (730)	2400	
D					2000	2460 (724)	2460 (730)	3600	

Timing : FAF/THR
6.0 NM

KT	MIN	SEC	KT	MIN	SEC
90	4	00	140	2	34
100	3	36	150	2	24
110	3	16	160	2	15
120	3	00	170	2	07
130	2	46	180	2	00

Notes : (1) Daytime only. OCH and MDH AAL
RVR AND VIS IN METERS
TCH : 15 m

CORRECTIONS: Frequency correction, AD Name

TABULAR DESCRIPTION

RNP RWY 06

Serial Number	Path Descriptor	Waypoint Identifier	Fly-Over	Course °M(°T)	Magnetic Variation	Distance (NM)	Turn Direction	Altitude (ft)	Speed limit (Kt)	VPA/TCH (°/m)	Navigation Specification
10	IF	KIBTU	-	-	-	-	-	+4500	-230	-	RNP APCH
20	TF	DEVMI	-	149 (148.5)	-	5.0	-	+4500	-230	-	RNP APCH
10	IF	TETBO	-	-	-	-	-	+4500	-230	-	RNP APCH
20	TF	DEVMI	-	329 (328.5)	-	5.0	-	+4500	-230	-	RNP APCH
10	IF	DEVMI	-	-	-	-	-	+4500	-230	-	RNP APCH
20	TF	OK401	-	059 (058.5)	-	5.0	-	@3700	-	-	RNP APCH
30	TF	RW06	Y	059 (058.5)	0	6.0	-	@1786	-	-3.0/15	RNP APCH
40	CF	OK402	Y	059 (058.5)	-	-	-	-	-230	-	RNP APCH
50	DF	TETBO	-	-	-	-	R	+4500	-230	-	RNP APCH
10	IF	DEVMI	-	-	-	-	-	+4500	-230	-	RNP APCH
20	HM	DEVMI	-	059 (058.5)	-	-	L	+4500	-230	-	RNP APCH

WAYPOINTS LIST

RNP RWY 06		
Waypoint Identifier	Latitude	Longitude
DEVMI	00°28'42.546"N	012°43'38.860"E
KIBTU	00°32'59.649"N	012°41'02.464"E
OK401	00°31'19.987"N	012°47'54.253"E
OK402	00°37'06.734"N	012°57'16.759"E
RW06	00°34'29.300"N	012°53'01.358"E
TETBO	00°24'25.441"N	012°46'15.252"E

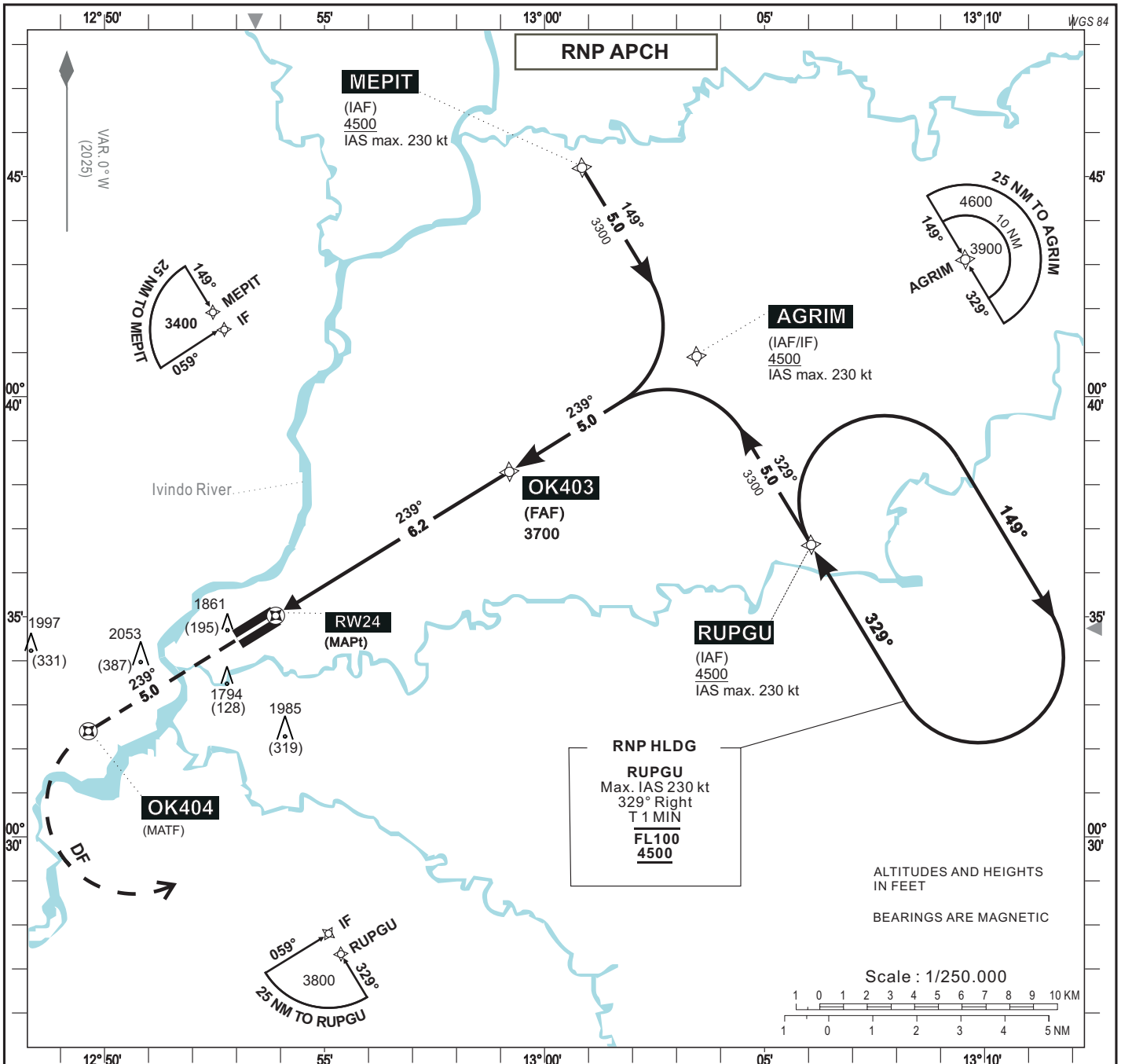
CORRECTIONS : Frequency correction, AD Name

INSTRUMENT APPROACH CHART
Categories A-B-C-D

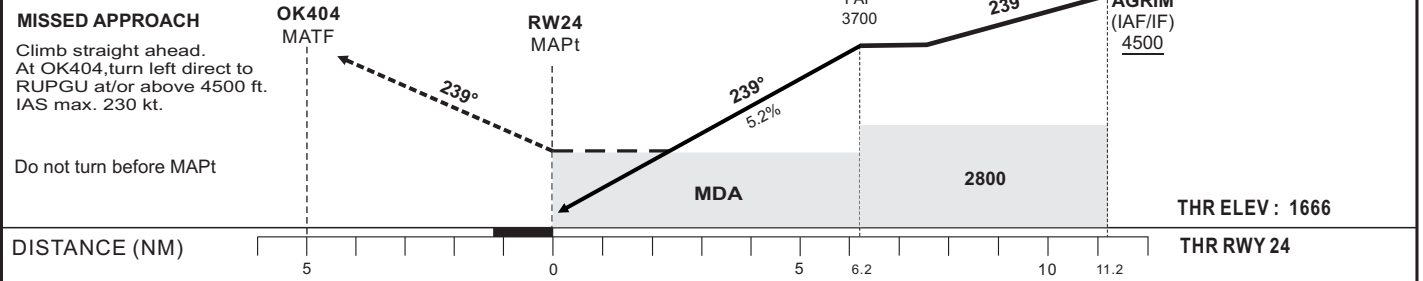
AERODROME ELEV : 1736
THR RWY 24 ELEV : 1666
HEIGHTS RELATED TO THR RWY 24 ELEVATION

AFIS : MAKOKOU INFORMATION 118.5

MAKOKOU / Emmanuel ISSOZE
NGONDET (FOOK)
RNP RWY 24



Distance to THR 24 (NM)	RWY24	2	3	4	5	FAF
Altitude (ft)		2355	2675	2990	3310	3700



CAT	LNAV				CIRCLING (1)				VIS
	OCA	OCH	MDA	MDH	OCA	OCH	MDA	MDH	
A					1500	2172 (436)	2180 (440)	1500	
B	2123 (457)	2130 (450)			1500	2362 (626)	2370 (630)	1600	
C					2000	2460 (724)	2460 (730)	2400	
D					2000	2460 (724)	2460 (730)	3600	

Notes: (1) Daytime only. OCH and MDH AAL
RVR AND VIS IN METERS
TCH : 15 m

Timing : FAF/THR					
6.2 NM					
100	3	Min 08	140	2	Min 39
110	3	Min 23	150	2	Min 29
120	3	Min 06	170	2	Min 11
130	2	Min 52	180	2	Min 04

CORRECTIONS: Frequency correction, AD Name

TABULAR DESCRIPTION

RNP RWY 24											
Serial Number	Path Descriptor	Waypoint Identifier	Fly-Over	Course °M(°T)	Magnetic Variation	Distance (NM)	Turn Direction	Altitude (ft)	Speed limit (Kt)	VPA/TCH (°/m)	Navigation Specification
10	IF	MEPIT	-	-	-	-	-	+4500	-230	-	RNP APCH
20	TF	AGRIM	-	149 (148.5)	-	5.0	-	+4500	-230	-	RNP APCH
10	IF	RUPGU	-	-	-	-	-	+4500	-230	-	RNP APCH
20	TF	AGRIM	-	329 (328.5)	-	5.0	-	+4500	-230	-	RNP APCH
10	IF	AGRIM	-	-	-	-	-	+4500	-230	-	RNP APCH
20	TF	OK403	-	239 (238.5)	-	5.0	-	@3700	-	-	RNP APCH
30	TF	RW24	Y	239 (238.5)	0	6.2	-	@1716	-	-3.0/15	RNP APCH
40	CF	OK404	Y	239 (238.5)	-	-	-	-	-230	-	RNP APCH
50	DF	RUPGU	-	-	-	-	L	+4500	-230	-	RNP APCH
10	IF	RUPGU	-	-	-	-	-	+4500	-230	-	RNP APCH
20	HM	RUPGU	-	329 (328.5)	-	-	R	+4500	-230	-	RNP APCH

WAYPOINTS LIST

RNP RWY 24		
Waypoint Identifier	Latitude	Longitude
AGRIM	00°40'55.097"N	013°03'27.243"E
MEPIT	00°45'12.209"N	013°00'50.855"E
OK403	00°38'17.668"N	012°59'11.835"E
OK404	00°32'23.958"N	012°49'38.026"E
RUPGU	00°36'37.984"N	013°06'03.625"E
RW24	00°35'01.395"N	012°53'53.424"E

CORRECTIONS: Frequency correction, AD Name